



Glassworks Julia

Accessibility card

Basic information

 Piechowice, ul. Kryształowa 73, 58-573
GPS: N 50.8505454, E 15.5887524

 +48 75 761 24 13 nebo 2

 turystyka@hutajulia.com

 <http://hutajulia.com/>

Description

Glassworks Julia is a place where history, the beauty of masterpieces made of glass and the handmade process blend together. The sightseeing tour is the production of glass. It runs through many production sites, including through places where experienced craftsmen blow and mould hot glass to create crystal products in front of visitors. In the next section, many other interesting stages of production can be seen - from glass grinding through the application of beautiful decorations to quality control and a masterpiece of wrapping crystal. The tour takes about 30-40 minutes and always takes place in guided groups. The factory also offers engraving workshops, glass painting and other events.

Accessibility

Entrance

- ❖ The main entrance from the car park (ticket office, café, colored glass shop, wheelchair accessible toilet) - 2 steps and ramp with handrails on both sides. Entrance doors are min. 80 cm wide, threshold height is max. 2 cm.
- ❖ Side entrance from Krzyształowa Street (formerly Żymierskiego) - ticket office, café, colored glass shop: +7 stairs.
- ❖ The main entrance to the factory: +10 stairs.
- ❖ The side entrance to the factory: no barriers.
- ❖ The door is min. 80 cm wide, threshold height max. 2 cm.
- ❖ The ticket office is wheelchair accessible.



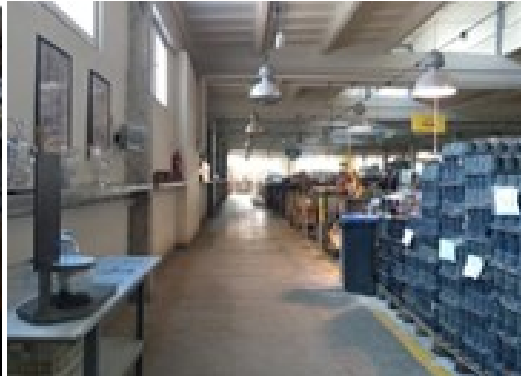
The main and the side entrance (ticket office, café, shop)



The main entrance to the factory and wheelchair accessible entrance for people with limited mobility

Interior premises – Guided Tour

- ❖ All pathways in the building are min. 150 cm wide, doors and passages are min. 80 cm wide, the surface is firm and non-slippery.
- ❖ The entire route is accessible for wheelchair users and families with children in a pram.
- ❖ All attractions for visitors are on the ground floor.
- ❖ The second floor is accessible by lift. The entrance to the lift is min. 80 cm wide and the cabin dimensions are min. 110 cm x hl. 125 cm.
- ❖ There are seating areas for resting and sufficient wheelchair / pram space for turning.
- ❖ It is not possible to touch the exhibits (glass) but they are clearly visible. Touch models of exhibits are not available.
- ❖ There are no information panels on the route. All information is provided by the guide.
- ❖ There may be high temperatures and high noise in the production hall.
- ❖ There may be pieces of glass on the ground.



Sightseeing route

Accessible toilet

- ❖ The wheelchair accessible toilet is located in a shop with colored glass near the ticket office.
- ❖ The cabin entrance door is min. 80 cm wide and it opens outwards.
- ❖ The cabin has min. 160x160 cm.
- ❖ Next to the toilet, there is sufficient turning space (at least 90 cm wide), which does not interfere with any equipment (waste bin, washbasin, baby changing unit, etc).

- ❖ There are handrails on the both sides of the toilet.
- ❖ There is a baby changing unit available.



Services and equipment

- ❖ A visit is possible without any prior agreement.
- ❖ Wheelchair access to the souvenir shop (glass) and café.
- ❖ Guide dogs entry is permitted but at your own risk. It should be taken in account that this is a functional glasswork and there may be a large amount of glass shards on the ground that can injure the dog's paws.
- ❖ There are not induction loops installed in the building.
- ❖ The printed guide is not available in Polish.
- ❖ A printed version of the guide in English and German is available for individual foreign visitors. Audio files are available in German, played on specific sites during the tour. Individual guided tours in German and English are also available - reservation required.
- ❖ Playground and children's corner available.
- ❖ Special programs (workshops) for children available - detailed information on the website.
- ❖ Reserved parking spaces available.

Date of processing: 2/2019