

Štramberk

Accessibility card

Basic information

📍 Štramberk, 742 66
GPS: N 49.592092, E 18.117858

☎ +420 558 840 617
(*Štramberk Municipal Information Centre*)

✉ mic@stramberk.cz

🌐 <http://stramberk.info>

Description

The town of Štramberk was founded in the 14th century. For its picturesque qualities it is called "Moravian Bethlehem". The dominant of the town are the ruins of a castle with a tower called Trúba, which today serves as a view point. Due to its ancient character and a unique set of timbered cottages Štramberk has been an urban conservation area since 1951. The Lachian nature trail (6 km long) runs through the town, with 14 stops and interesting historical and natural sites in and around the town.

The card describes the accessibility of the castle (Trúba) and the town centre (the square and the nearest surroundings).



Accessibility

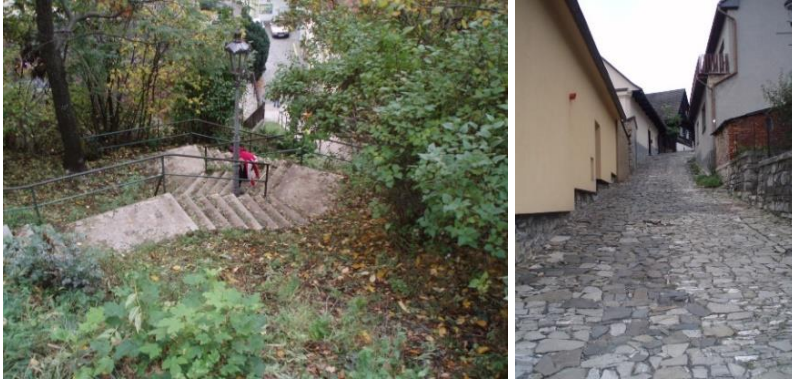
Entrance - access to the castle and the square

Castle

- ❖ Štramberk castle (with the Trúba tower) stands on a rocky hill and is difficult to access.
- ❖ From the square you can get to the castle by two ways: the stairs from the left corner of the square or the way around the church on the right side of the square and then along Kopec and Jaroňkova streets.
- ❖ Stairway: concrete and stone steps (approx. 90 steps), width 60-100 cm and approx. 100 m long, stone paved path with large gaps.
- ❖ Road around the church: stone paved, length 500 m, width about 3 m in diameter.
- ❖ The surface of both access roads is uneven, transverse slope up to 5%, longitudinal gradient up to 20%.

Square

- ❖ The square is reachable by car.
- ❖ Access road surface: cobblestone, uneven terrain, climb.



From left: Access to the castle by stairs and around the church

Interior premises – castle

- ❖ There are 29 steps in front of the castle.
- ❖ Access to the ticket office is with a barrier, 3 stone steps. The ticket office is not equipped with an induction loop.
- ❖ The entrance to Trúba is not accessible by a wheelchair - there is a turnstile and 7 stone steps in front of the entrance, the entrance door is 86 cm wide.
- ❖ About 160 steps lead to the observation gallery. It is a spiral staircase with handrails with different stair steps of various materials - wood, concrete, iron, stone. The width of the staircase and the route to the walkway is 91-115 cm, in places narrowing to 77 cm.
- ❖ There are no seating areas available.



From left: Access to the castle, entrance to the ticket office, entrance to Trúba



Staircase inside Trúba

Exterior premises – square

- ❖ The square is on a slope (downwards 9%). Its centre has a surface made of interlocking pavement.
- ❖ Around the square there is a road with a pavement, which often includes front yards of restaurants or advertising banners. There is no pedestrian zone.
- ❖ There are seating areas.
- ❖ Narrow streets with cobblestones or stone pavements without pavements, with greater longitudinal (more than 10%) and lateral transverse slopes follow the square.



Accessible toilet

Castle

- ❖ There is only a non-disabled toilet in the castle area.
- ❖ A baby changing unit is not available.

Square

- ❖ There is no public toilet in the square.

Services and equipment

- ❖ There is an information centre in the square. There are stairs with a staircase at the entrance.
- ❖ Guide or registered assistance dogs are permitted by appointment only.
- ❖ Virtual tour of Trúba available on the web <http://stramberskatruba.cz/cs/stramberska-truba/virtualni-prohlidka>.
- ❖ Possibility of parking in the square, only 1 reserved parking space available.

Date of processing: 11/2022