



Peace Church in Jawor

Accessibility card

Basic information

 Jawor, ul. Pięciuset Lat Reformacji 1, 59-400
GPS: N 51.053937, E 16.189175

 +48 516 493 990
 jawor@luteranie.pl
 <http://kosciolpokojujawor.pl/>

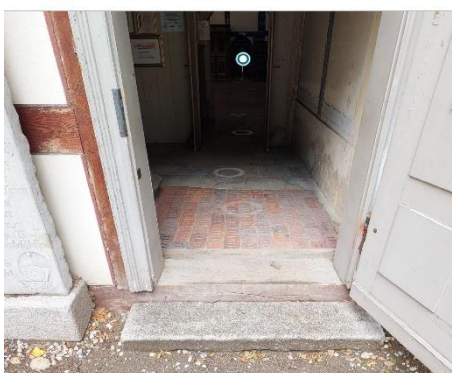
Description

The Peace Church in Jawor is the largest religious building in the world of its type (wooden). In 2001 it was inscribed on the UNESCO World Heritage List. The churches of peace were built in the second half of the 17th century after the Peace of Westphalia, which ended the Thirty Years' War (1618-1648), in Głogów, Jawor and Swidnica. The common feature of the three temples of Silesian Lutherans is the absence of a tower, bells or a traditional shape of sanctuary.

Accessibility

Entrance

- ❖ There is a 20 cm high threshold at the entrance.
- ❖ The entrance door is min. 80 cm wide.
- ❖ The surface in front of the entrance is reinforced (natural stone).
- ❖ There is sufficient area, no inclination, no obstacles.



Interior premises

- ❖ All pathways in the church are min. 150 cm wide.
- ❖ The doors and passages are min. 80 cm wide.
- ❖ Surface: solid and non-slippery.
- ❖ Seating area for resting available.
- ❖ Sufficient turning space, no obstacles. Access to the first floor: wooden stairs, no lift. All available ground floor spaces are free of any major obstacles (one step in the middle).



Accessible toilet

- ❖ There is no toilet in the premises.

Services and equipment

- ❖ Wheelchair access to the ticket office and souvenir shop available.
- ❖ Guide and registered support dogs are permitted entry.
- ❖ Virtual tour on the website available.

Date of processing: 11/2022