





Landscape Park at St. Anna's Mountain

Accessibility card

Basic information

 Góra Św. Anny, ul. Leśnicka 10, 47-150
GPS: N 50.453076, E 18.167565

 +48 77 4 61 50 74
 gsa@zopk.pl
 <http://zopk.pl/pl/>

Description

Landscape Park „Hora sv. Anny” (St. Anna's Mountain) was founded in 1988. It includes Chelm and its highest point a mountain of St. Anna. The park area is 5.051 ha, with a protection zone of over 13,700 ha.

It is a place of exceptional natural and geological values, so in 2010 it was given the status of a national geo park (there are 3 geo parks in Poland). In the geo park visitors can see some of the most



beautiful and best-preserved profiles of the middle coniferous limestone with numerous well-preserved fauna and flora, as well as the remains of inactive strata-volcano.

The central point of the park is St. Anna's Mountain (404 m above sea level), of volcanic origin, with a pilgrimage site with the Basilica of St. Anna and the Franciscan Monastery. On the slopes of the mountain there is an 18th century Calvary made up of 40 chapels. On St. Anna's Mountain there is a huge amphitheatre, the Uprising Monument and other attractions. Around St. Anna's Mountain leads a dense network of marked nature trails, hiking trails and cycling trails. For detailed route information, visit <http://zopk.pl/pl/>. Geo park tours take place without a guide.

Accessibility

Entrance

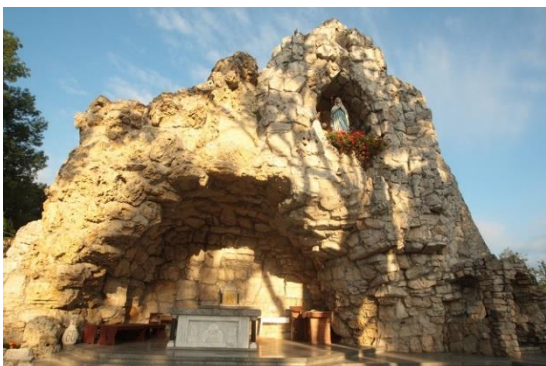
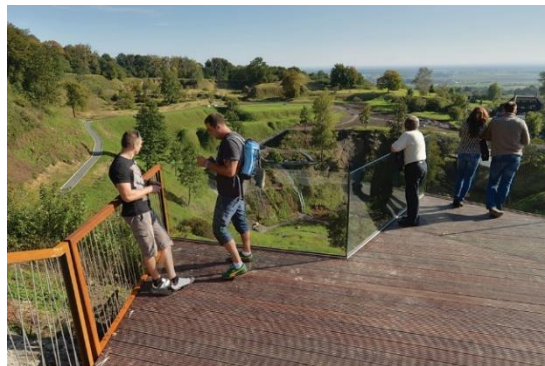
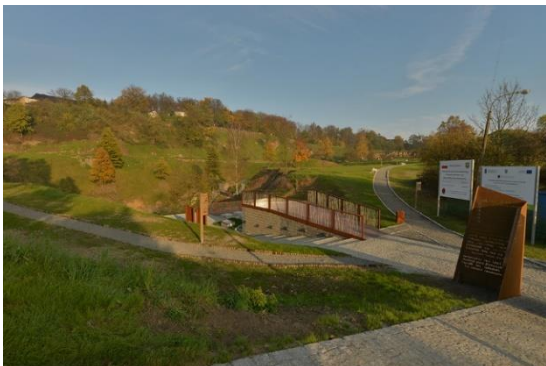
- ❖ The park has no marked entrances. There are information boards near the nature trails. In addition to the St. Anna's Mountain entrances to the trail are also from villages: Żyrowa, Ligota Dolna and Zalesie Śląskie.
- ❖ The entrance to the geological reserve - the nepheline stone quarry is located near the Pod Górą Chełmską motel (Under the Chelm Mountain). The entrance is wheelchair accessible, more than 80 cm wide.



From left: Entrance to the geostation, entrance to the geological reserve - the nepheline stone quarry

Exterior premises

- ❖ Due to the location and nature of the park, the park's surface is uneven, with many obstacles such as narrow passages, narrow forest paths, long slopes, transverse slopes, roots, stairs, etc.
- ❖ The pathway material is various. In the park you will find trails with asphalt or paved surfaces, as well as sections with difficult surfaces - field / forest roads, paved natural areas, meadows.
- ❖ Some sections of the trail are therefore very limited or unavailable for people with reduced mobility, visually impaired or with a pram.
- ❖ In the park there are pergolas and seating areas for resting.
- ❖ Information and orientation boards (in Polish) on the trails are easy to read and understand.



From left: Geostation, observation platform, Lourdes cave, rock amphitheatre and uprising memorial

Accessible toilet

- ❖ A wheelchair accessible toilet is located in the Pilgrim's House (Dom Pielgrzyma, al. Jana Pawła II 7, Góra Św. Anny).
- ❖ The entrance door to the cabin is min. 80 cm wide.
- ❖ The door opens outwards (from the cabin).
- ❖ Cabin dimensions are min. 160x160 cm.
- ❖ Next to the toilet, there is free space for the wheelchair (wide at least 90 cm), which does not interfere with any equipment (waste bin, washbasin, baby changing unit, etc.).
- ❖ There is a handrail on both sides of the toilet.
- ❖ There is a baby changing unit.

Services and equipment

- ❖ Wheelchair access: a souvenir shop (St. Anna's Mountain), gastronomic facilities (St. Anna's Mountain, Leśnica, Zdieszowice, Zakrzów, Olszowa)
- ❖ Possibility of visiting the park without a prior agreement.
- ❖ Guide and registered support dogs are permitted entry with the exception of the monastery complex and the Pilgrim's House (Dom Pielgrzyma).
- ❖ Children's playground (St. Anna's Mountain - 2 playgrounds, Wysoka, Leśnica, Ligota Dolna, Kadłubiec, Czarnocin, Żyrowa - 2 playgrounds).
- ❖ Children's corner (St. Anna's Mountain - Pilgrim's House).
- ❖ Special information materials for kids - educational guide for children and colouring books.
- ❖ Reserved parking spaces (Pilgrim's House).

Date of processing: 11/2022

The author of all the photos is Marek Zarankiewicz.