




Moszna Castle

Accessibility card

Basic information

 Moszna, Ul. Zamkowa 1, 47-370 Zielina
GPS: N 50.4406972, E 17.7678638

 +48 77 552 77 07
 biuro@mosznazamek.pl
 <http://mosznazamek.pl/>

Description

Moszna Castle is the largest castle in the Opole Voivodeship. The castle is attractive for tourists thanks to its architecture and extensive park with centuries-old oaks and lime trees. The castle has 365 rooms and 99 towers. It was built in the mid-18th century. It is partly open to tours. Music concerts and art exhibition take place in the gallery. Since 2013, the castle has a hotel, a restaurant and a café. The property has conference rooms and lounges for family events. There is a state stud farm in the park. Guided tours of the castle are multimedia and takes place without guide.

Accessibility

Entrance

- ❖ There is a threshold of 10 cm at the entrance, which can be overcome with a ramp (width 130 cm, length 70 cm, height 10 cm, without handrails).
- ❖ The entrance door is min. 80 cm wide, opening inwards, threshold lower than 2 cm.
- ❖ The area in front of the entrance is made of granite cubes.



The entrance, the ramp

Interior premises – part of the castle available to visitors

- ❖ Behind the entrance door, there is one more double-sided door without a threshold to enter the main hall with the reception. On the ground floor of the castle there is a conference room, a café, a restaurant, toilets and entrance to the courtyard.
- ❖ There is a lift in the castle. The entrance to the lift is min. 90 cm wide. The lift cabin has a width of 145 cm and a depth of 100 cm. The lift connects the basement with the third floor. A wheelchair user gets to all parts of the castle during a tour except the chapel and gold suite.
- ❖ All castle corridors are min. 110 cm wide.

- ❖ All doors and passages are min. 80 cm wide.
- ❖ The surface of the lock paths is rigid and non-slippery. Material: parquet and carpets.
- ❖ There are various types of stairs in the castle: straight, spiral, wooden, stone.
- ❖ There is sufficient manipulating area to move people in the wheelchair. Visiting rules of the castle do not allow entry with prams to the tour.
- ❖ There are relaxing areas for sitting in the castle.
- ❖ You cannot touch the exhibits. Touch models of exhibits are not available.



Communication paths



The exhibition halls

Exterior premises – park

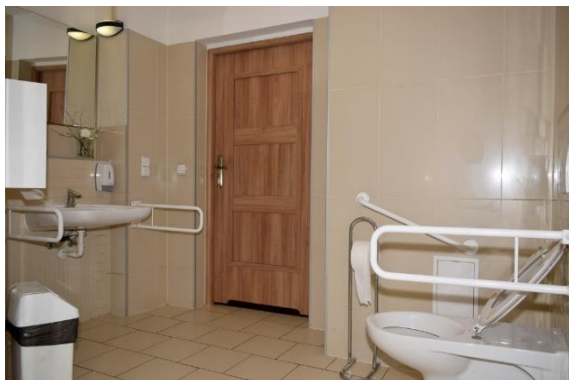
- ❖ The castle is surrounded by a park.
- ❖ The park is basically wheelchair accessible, without stairs / thresholds higher than 5 cm and other obstacles.
- ❖ The surface of the pathways in the park is solid and straight (no defects), min. 150 cm wide.
- ❖ The paths are flat or slightly undulating level (with a slope of up to 6%) and do not complicate the movement of people in wheelchairs or prams.
- ❖ Information and orientation boards in Polish are easy to read and understand on pathways in the park. *They will also be available in Czech, English, and German once the revitalization is complete.*

- ❖ There are resting places for sitting (benches) in the park.



Accessible toilet

- ❖ A wheelchair accessible toilet is located next to the restaurant and does not require a special key.
- ❖ The cabin entrance door is min. 80 cm wide and it opens outwards (from the cab).
- ❖ Cabin dimensions are min. 160x160 cm.
- ❖ Next to the toilet, there is free space for the wheelchair (width min. 90 cm), which does not interfere with any equipment (waste bin, washbasin, baby changing unit, etc.).
- ❖ There are handrails on both sides of the toilet.
- ❖ A baby changing unit is available.



Services and equipment

- ❖ An individual visit to the castle is possible without prior agreement. Reservations in advance are required for foreign and organized groups.
- ❖ Visiting the castle without a guide. On the route there are written tables in Polish, German and English. In addition, a recording of the lecturer's voice about the place to be visited (in Polish language) is played in each room. Those with a smartphone can download the Smart Guide app, which enables listening to recordings in multiple languages.
- ❖ Guide and registered support dogs are permitted entry.
- ❖ Wheelchair accessible entry available: a reception / a ticket office, a cloakroom, a souvenir shop, conference halls, gastronomic facilities (a café, a restaurant).
- ❖ Virtual tour: https://www.opolskie.pl/wirtualne/zm_start.html.
- ❖ Wheelchair rental available.
- ❖ Playground, children's corner available

- ❖ Special programs and information material for children.
- ❖ Parking with reserved parking spaces.
- ❖ Induction loops are not installed in the building.
- ❖ A printed version of the guide in Polish is not available.
- ❖ For individual foreign visitors there is not available an audio-visual guide or printed version of the guide.

Date of processing 11/2022